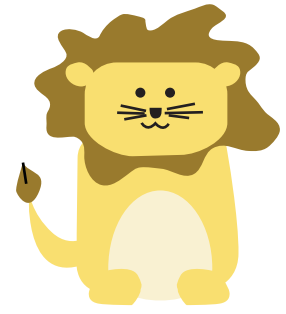


# Lion Sudoku



Complete the four Sudoku puzzles.  
Every row, column, and 3x2 block  
must contain the numbers 1 through 6 once.

Difficulty: ★★☆☆

			4	5	
4			2		
2	1	4	6		
		6	1	4	2
		2			1
	5	1			

	4		2		
	3			1	5
4		2	3		
		3	1		4
3	6			4	
		4		3	

1			5	3	6
6	3			1	
3					
					5
	1			4	2
2	4	6			3

	1		2		
	5	2			6
6				1	
	2				3
1			3	2	
		5		6	